



Department of
Education

Shaping the future

Standalone bushfire plan 2025-2026

Dalyellup College

July 2025



Purpose

The *Standalone bushfire plan* document is a detailed plan of how your school or site is to prepare and respond to the bushfire high-threat period or in the event of a bushfire.

As principal or site manager, you must complete this template to have a plan in place to respond to a bushfire emergency. This plan is to be read in conjunction with information on Ikon to [prepare for bushfire season at your school](#).

All staff, students, contractors and visitors on the school or site are to follow this completed plan in the event of a bushfire emergency. All other emergencies are to be managed in accordance with the school or site's incident management plan, as per the [Incident management manual](#).

Complete and lodge your plan online by 31 August.

Contents

1. School or site details	3
2. Emergency response contact list	4
2.1 Important bushfire emergency contact sources.....	5
3. School or site Response Team	6
4. School or site response telephone tree	10
5. Emergency equipment	11
6. Bushfire preparation checklist	12
7. Bushfire action plan maps	14
7.1 Onsite 'safer building location(s)'	14
7.2 Offsite evacuation locations	14
Appendix A - Bushfire warning stages	16
Appendix B - Procedures in the event of a sudden bushfire	18
Relocate to onsite 'safer building location'	18
Offsite evacuation procedures	20
Appendix C - Pre-emptive (planned) school closure procedures	22
Flow chart – Principal's pre-emptive school closure response	23
Appendix D - After-hours or school holiday procedures	24

1. School or site details

To complete this plan, on the front cover of the document:

- insert your school or site name
- add the year for the new bushfire season
- add the date in the footer to show when the plan became active.

Enter information into the **grey** sections of this document, following the prompts in the square brackets where featured. You can add extra rows to tables where necessary.

When your plan is complete, follow the steps on Ikon to [lodge, update or access your standalone bushfire plan online](#).

School or site details	
School or site name (include name of co-located school or facilities if applicable)	DALYELLUP COLLEGE
School or site address	1 WAKE DRIVE, DALYELLUP WA 6230
Education Region	SOUTH WEST
Number of students	590
Number of students requiring extra support if evacuating	0
Number of staff	76
Estimated number of animals on site, if applicable	0
Estimated number of animals on site that would require evacuation, if applicable	0
Number of school or site sides bordered by bush	2
Names of major roads bordering school or site	1 Wake Drive
School or site's site-specific alert, for example: <ul style="list-style-type: none"> • siren/pause x 3 • continuous handbell • continuous siren or short whistle blasts 	Continuous siren (repeated pattern of increasing crescendo)
Plan prepared by Principal	Eloise Kyneur
Date prepared or reviewed	20 August 2025

2. Emergency response contact list

Dial 000 in an Emergency

Enter the contact details into the following table:

Organisation	Details	Phone number / website
Local police (for example, name of nearest police station)	Bunbury Police Station	(08) 9722 2111
Local hospital (name of nearest hospital or medical emergency facility)	Bunbury Hospital	(08) 9722 1000
Department of Fire and Emergency Services regional contact	Matt Folini	1800 411 742
Local fire brigade (always use 000 during an emergency)	Bunbury Fire Station	(08) 9796 3422
Local bushfire brigade (for example name of nearest station)	Dalyellup & Gelorup	Jeff McDougall 0427 959 830 Neill Rowlandson 0427 056 888 Graham Briggs 0427 056 888
Bus contractors (ready for pre-emptive closure or offsite evacuation)	<ul style="list-style-type: none"> Nicholls Bus and Coach (Bridgetown) Public Transport Authority Perth (PTA) and SBS School Bus Services Bunbury City Transit/Veolia Transport Loves Bus Service Buswest / ATG Capel Bus Service South West Coachlines Busselton 	(08) 9881 1736, 1800 199 4477 (08) 9220 9999 (24hr emergency) (08) 9326 2576 (08) 9326 2625 (08) 9072 1717 (08) 9791 3133 0409 834 975, (08) 9721 9500 0400 385 596 (08) 9753 7700, 0419 600 541
Electricity provider - in the case of a power outage (for example, Horizon Power, Western Power)	Western Power	13 13 51
State emergency service	State Emergency Service	13 25 00
Poisons information (where relevant)	Poisons Information	13 11 26
Director of Education, Southwest Regional Office	Dainon Couzic	9791 0314 / 0466 573 908

--	--	--

2.1 Important bushfire emergency contact sources

DIAL 000 in an emergency

Emergency WA

Website: <https://www.emergency.wa.gov.au/>

Department of Fire and Emergency Services

Information line: 13 33 37

Website: <https://www.dfes.wa.gov.au/>

Facebook: <https://www.facebook.com/dfeswa>

Twitter: https://twitter.com/dfes_wa

ABC Emergency

Website: <https://www.abc.net.au/emergency>

Local radio

ABC local radio: Find your local radio station at <https://www.abc.net.au/local>

6PR: Listen online at <https://www.6pr.com.au/listen-live/> or tune into AM 882 and Digital Radio

3. School Response Team

Enter the names and mobile numbers of the staff responsible for carrying out emergency procedures during a bushfire event. The principal or site manager coordinates the incident response to onsite or offsite locations (refer to Appendix B & C procedures).

Examples of suggested duties include:

- fire warden duties
- checking all rooms
- keeping a copy of school or site registers for roll call
- monitoring the bushfires warnings stages (as per Appendix A)
- send out text alerts to parents
- liaising with emergency services, community members, parents and carers
- enacting plan for animal welfare in an emergency if applicable.

Consider making cards that outline the duties of the school or site response team. This can be useful to hand out at the start of the incident.

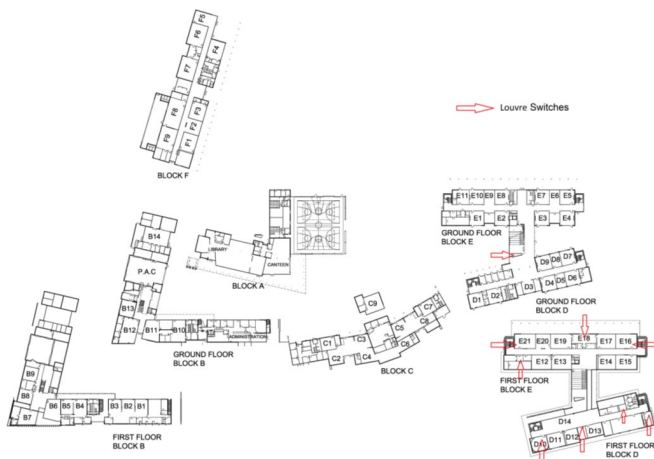
Position	Staff name	Duties	Mobile number
Principal	Eloise Kyneur	Incident Controller duties: <ul style="list-style-type: none"> • Monitor and assess bushfire warning stages (refer to Appendix A). • Raise alarm throughout school to evacuate or relocate to 'safer building location' (refer to Appendix B) • Reassign roles if staff absent. • Make way to muster area (refer to S. 7 Bushfire action plan maps). • Monitor situation and ensure that no-one returns to any building unless authorised to do so after consultation with emergency services. • Provide ongoing advice to Regional Executive Director. • Sound stand down signal if / when required. 	0404 664 232
Deputy Principal	Neil Robertson and Chris Darlington	Fire Warden duties: <ul style="list-style-type: none"> • Check ground floor BLOCK B. Close open windows and lock doors. • Make way to muster area (refer to S. 7 Bushfire action plan maps). • Receive reports of missing persons from HOLAs/TIC/SSPC • Report to incident controller and assist 	NR - 0405 063 877 CD – 0428 729 386
	Renee Reid and Andrew Thom	Fire Warden duties: <ul style="list-style-type: none"> • Check first floor BLOCK B. Close open windows and lock doors. • Make way to muster area (refer to S. 7 Bushfire action plan maps). • Receive reports of missing persons from HOLAs/TIC/SSPC • Report to incident controller and assist. 	RR - 0421 400 769 AT – 0439 968 580

Manager Corporate Services	Eileen Annandale	Fire Warden duties: <ul style="list-style-type: none"> • Send out text/compass alert to parents (refer to Appendix C) • Make way to muster area (refer to S. 7 Bushfire action plan maps). • Receive reports of missing persons from Gardner, Cleaner in charge, Education Assistant – Lead and check support staff (as per organisational chart). • Report to incident controller and assist. 	0428 916 954
HR & Business Support Officer/ VET & WPL Coordinator	Jaimi Henderson and Penny Starr	Fire Warden duties: <ul style="list-style-type: none"> • Check BLOCK A. Close open windows and lock doors. • Collect students that are in private study • Make way to muster area (refer to S. 7 Bushfire action plan maps). • Check non-teaching and visitor register. • Report to incident controller and assist. 	JH – 0401 765 142 PS – 0419 938 789
HOLA – Technologies /Home Economics Assistant	Dale Chatman and Kerry Preston	Fire Warden duties: <ul style="list-style-type: none"> • Check BLOCK F. Close open windows and lock doors. • Make way to muster area (refer to S. 7 Bushfire action plan maps). • Report to incident controller and assist. 	DC – 0475 258 415
HOLA – HASS and Program Coordinator	Curtis Plumb and Jenaya Bell	Fire Warden duties: <ul style="list-style-type: none"> • Check BLOCK C, including Radio Station. Close open windows and lock doors. • Ensure all louvres are closed. • Make way to muster area (refer to S. 7 Bushfire action plan maps). • Report to incident controller and assist. 	CP – 0408 141 941 JB – 0428 263 225
Program Coordinator and HOLA HPE	Inga McQueen and HPE HOLA	Fire Warden duties: <ul style="list-style-type: none"> • Check BLOCK D. Close open windows and lock doors. • Ensure all louvres are closed. • Make way to muster area (refer to S. 7 Bushfire action plan maps). • Report to incident controller and assist. 	IM -0407 955 919
HOLA Maths and HOLA Science	Travis Chromiak and Collin Abbott	Fire Warden duties: <ul style="list-style-type: none"> • Check BLOCK E. Close open windows and lock doors. • Ensure all louvres are closed. • Make way to muster area (refer to S. 7 Bushfire action plan maps). • Report to incident controller and assist. 	TC – 0439 974 973 CA – 0448 753 828

Student Services Officer	Chris Thompson / School Officer 2	<p>Roles:</p> <ul style="list-style-type: none"> • Collect list of students in, turn off air conditioner, close windows, then collect students in sick bay and escort to the designated muster area for Science (refer to S. 7 Bushfire action plan maps). Do not lock doors – this task will be completed by Fire Wardens. • Check class list. • Report any missing student to HOLA/TIC. • Remain with students and supervise. 	Chris 0427 573 391
HOLAs/TIC/S S PC	Travis Chromiak, Dale Chatman, Curtis Plumb, Andrew Thom, Collin Abbott, Chris Darlington, Blake Kampen	<p>Roles:</p> <ul style="list-style-type: none"> • If with class, collect laptop or digital device for Compass access, turn off air conditioner, close windows, then escort students, volunteers and any other persons in their charge to the designated muster area. Otherwise, ensure air conditioner is turned off in current location, then make way directly to muster area. Do not lock doors – this task will be completed by Fire Wardens. • Direct teacher team (as per organisational chart) to seat students in area designated on muster area map (refer to S. 7 Bushfire action plan maps). • Check all staff in team are present. • Receive advice from staff regarding any missing persons. • Report any missing persons to deputy principal (as per organisational chart). 	
Teachers	All staff	<p>Roles:</p> <ul style="list-style-type: none"> • Collect laptop or digital device for Compass access, turn off air conditioner, close windows, then escort students, volunteers and any other persons in their charge to the designated muster area (refer to S. 7 Bushfire action plan maps). Do not lock doors – this task will be completed by Fire Wardens. • Check class list. • Ensure students in withdrawal class are returned after arriving at the designated assembly area. • Report any missing student to HOLA/TIC. • Remain with students and supervise. 	

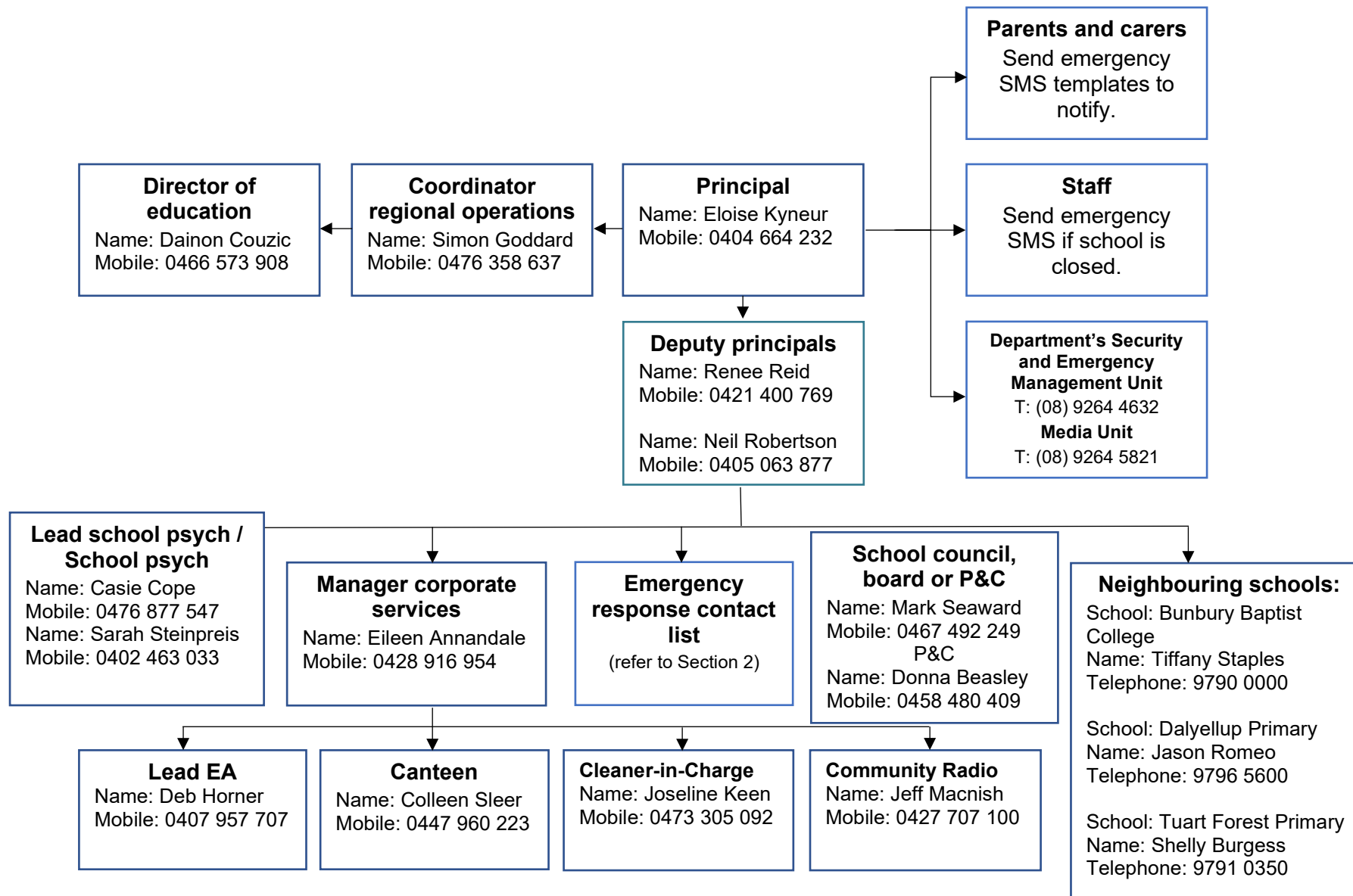
<p>School Officers</p>	<p>1. Isla Daly 2. Tegan Donovan 3. Taleeya Devenish 4. Kerylee Grieve</p>	<p>Roles:</p> <ul style="list-style-type: none"> • School officer 1, immediately take checkpoint box and proceed to on-site safer location (refer to S. 7 Bushfire action plan maps). • School officer 2, place evacuation notice on front entrance door and lock and proceed to muster area (refer to S. 7 Bushfire action plan maps). • School officer 3 and 4, collect first aid kit, epipen, ventolin diabetic emergency kit, personal mobiles, keys and proceed to muster area (refer to S. 7 Bushfire action plan maps). 	
<p>School Gardener</p>	<p>Brian Ross 0411 402 756</p>	<p>Activate irrigation system for area in direct line and then proceed to muster area (refer to S. 7 Bushfire action plan maps).</p>	
<p>Accredited first aid officers</p>	<p>Neil Robertson Dharam Apanah Jenaya Bell Jessica Coenen Jo Daniels Debbie Deighton Taleeya Devenish Tiffany Drage Sam Eaton Biance Flay Tania Galati Bronwyn Horne Inga McQueen Crystal Peel Renee Reid Valinda Sabourne Zac Simpson Penny Starr Chris Thompson Alexandra Walker-Bell Yvonne Walker Shakira Walsh</p>	<p>Roles:</p> <ul style="list-style-type: none"> • First aid provision as required. 	

3.1 Location of louver switches



4. School or site response telephone tree

Complete the information boxes with contact details for relevant stakeholders.



5. Emergency equipment

Identify the location and the type of emergency equipment at your site.

Equipment	Details (include location/s, date checked and any other comments)
Evacuation kit (section 7 of the school or site Incident Management Plan).	Located in administration block
First aid kit(s) - include masks in case some students are susceptible to smoke.	Located in administration block
Animal emergency kit (refer to Preparedness for animal welfare in emergencies on the Department of Primary Industries and Regional Development).	N/A
Emergency alert system and communication equipment, for example: <ul style="list-style-type: none"> • mobile telephones (charged) • hand-operated fire alarm (portable siren) • megaphone/loud hailer • portable CB radios • spare batteries. 	School PA system Portable loudspeaker Mobile telephones
Registers for: <ul style="list-style-type: none"> • students • staff • visitors. 	All registers are available on Compass
Standalone bushfire plan: <ul style="list-style-type: none"> • hard copy in the evacuation kit • copy saved to an online platform for access offsite. 	Located at entrance of all Admin offices and on Teams

6. Bushfire preparation checklist

Principals must:

- complete this bushfire preparation checklist annually
- inform all staff members of their responsibilities.

You can provide details of your preparation activities in the comments.

Management activities	<input checked="" type="checkbox"/> or N/A	Comments
The annual review of the Standalone bushfire plan has been completed before the start of bushfire season.	<input checked="" type="checkbox"/>	
<p>Consulted and received advice in preparing your Standalone bushfire plan from any of the following(as relevant):</p> <ul style="list-style-type: none"> • local Emergency Services • Department of Fire and Emergency Services • Department of Biodiversity, Conservation and Attractions – Parks and Wildlife Service • local volunteer fire brigade • WA Police Force • Local Emergency Management Committee (LEMC) or Local Government Representative • Local Community Emergency Services Manager (if there is one) 	<input checked="" type="checkbox"/>	
<p>Staff have been made aware of the Standalone bushfire plan through:</p> <ul style="list-style-type: none"> • staff meetings • staff bushfire induction session that includes: <ul style="list-style-type: none"> – an overview of the Standalone bushfire plan – how to turn off evaporative air conditioner units, the location of switches – how to close roof vents – the types of bushfire warnings issued by the Department of Fire and Emergency Services and the Emergency Alert telephone warning system – to direct bushfire media enquiries to the Department's media unit (08) 9264 5821. 	<input checked="" type="checkbox"/>	
<p>Students and parents or carers have been made aware of the Standalone bushfire plan through:</p> <ul style="list-style-type: none"> • key bushfire safety messages incorporated into the curriculum • newsletters • school or site information booklet (include actions and procedures) • school or site website. 	<input checked="" type="checkbox"/>	<p>Newsletter: Available online and through office Website: www.dalyellupcollege.wa.edu.au Standalone bushfire plan is located under School Information</p>

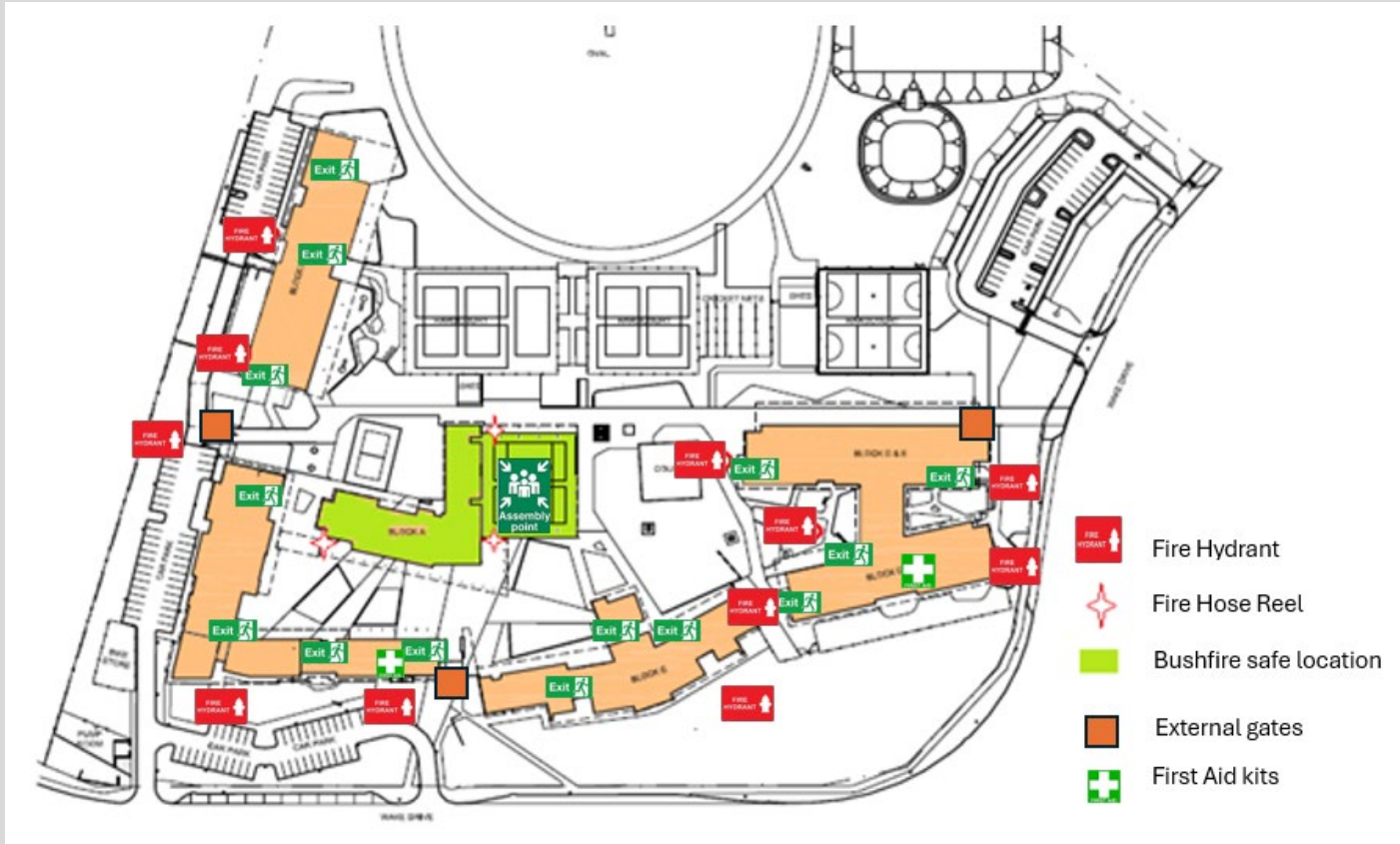
Management activities	☑ or N/A	Comments
<p>Communication plans are in place:</p> <ul style="list-style-type: none"> • Emergency response contact list completed (section 2). • Bushfire response telephone tree completed (section 4). • communication templates for sample emergency text message, newsletter content and school or site notice text are complete (refer to Appendix D). <p>Contact lists for staff and parents must be current.</p>	<p>☑</p> <p>☑</p> <p>☑</p>	
<p>Emergency equipment available and checked (section 5):</p> <ul style="list-style-type: none"> • evacuation kit checked at least once per term • emergency warning or alert system works • emergency communications equipment available • first aid kit(s) available • registers for students, staff and visitors readily accessible for roll call. 	<p>☑</p> <p>☑</p> <p>☑</p> <p>☑</p> <p>☑</p>	
<p>Practise drills moving to your onsite 'safer building location(s)':</p> <ul style="list-style-type: none"> • before the start of the bushfire season • at least once per term during the bushfire season. <p>You must do at least 2 drills per year.</p>	<p>☑</p> <p>☑</p>	
<p>The asset protection zone, which is a minimum distance of 20 metres surrounding the main school or site buildings, is checked and is:</p> <ul style="list-style-type: none"> • clear of all rubbish, long dry grass, bark, flammable and combustible materials, including leaf litter and unused piles of mulch • maintained routinely throughout the year. <p>For information on the asset protection zone, refer to Prepare for bushfire season at your school on Ikon.</p>	<p>☑</p> <p>☑</p>	

7. Bushfire action plan maps

7.1 Onsite 'safer building location(s)'

Map last updated: 13 /08/2025

Onsite 'safer location' – Gymnasium and Library



Emergency, dial 000

Primary action:

Determine if the bushfire is a threat to the school. Monitor official sources listed in section 2.

Secondary action:

Refer to Appendix B for the procedures to relocate to onsite 'safer building location(s)'.

Information to help select your offsite evacuation location and a sample map is available on Ikon in [Prepare for bushfire season at your school](#).

7.2 Off-site evacuation locations

Off-site Safer Location:

- 1st offsite location - Dalyellup Primary School 14 Hartog Road, DALYELLUP
- 2nd offsite location - Bunbury Baptist College 113 Norton Promenade, DALYELLUP

Map last updated: 13 / 08 / 2025 - Dalyellup Primary preferred off-site location



Emergency, dial 000

Primary action:

Determine if the bushfire is a threat to the school. Monitor official sources listed in section 2.

Secondary action:

Refer to Appendix B for the procedures to Relocate to an offsite evacuation location

Map last updated: 27 / 08 / 2025 – Bunbury Baptist College preferred 2nd off-site location



Emergency, dial 000

Primary action:

Determine if the bushfire is a threat to the school. Monitor official sources listed in section 2.




Secondary action:

Refer to Appendix B for the procedures to Relocate to an offsite evacuation location

2nd Off-site Secondary location

Appendix A - Bushfire warning stages

Emergency services communicate information in a number of ways during a bushfire event. Use these warnings to understand when your need to activate your bushfire procedures (refer to Appendix B).

Bushfire warning stages	
<p>ADVICE</p> 	<p>A fire is active but there is no immediate threat to lives or homes. Be aware and keep up to date.</p> <p>This is general information to keep principals informed and up to date with developments.</p> <p>Principals must:</p> <ul style="list-style-type: none"> • turn off evaporative air conditioners and ensure roof vents are closed. • check and patrol the school or site regularly for bushfire activity, paying particular attention to the evaporative air conditioners.
<p>WATCH AND ACT</p> 	<p>There is a possible threat to lives or homes. Take action now to protect yourself and others.</p> <p>Principals must prepare to:</p> <ul style="list-style-type: none"> • evacuate; or • move students, staff and visitors to their pre-determined onsite 'safer building location'. They must not be moved to an open area. <p>Evacuation orders are:</p> <ul style="list-style-type: none"> • issued by the Incident Controller or Emergency Services if required. • relayed via official sources such as Emergency WA. <p>It is vital that the principal:</p> <ul style="list-style-type: none"> • accesses bushfire information from official sources • makes an informed decision to stay onsite or evacuate offsite based on advice from the Incident Controller or Emergency Services.
<p>EMERGENCY</p> 	<p>There is a threat to lives and homes. You may be in danger and need to take immediate action.</p> <p>The principal will be advised whether staff, students and visitors can leave the area or if they must shelter where they are as the fire burns through the area.</p> <p>A siren, called the State Emergency Warning Signal (SEWS), may accompany an emergency warning.</p> <p>Evacuation orders are:</p> <ul style="list-style-type: none"> • directed by the Incident Controller or Emergency Services. • relayed via official sources, such as Emergency WA. <p>It is vital that the principal:</p> <ul style="list-style-type: none"> • accesses bushfire information from official sources • makes an informed decision to stay onsite or evacuate offsite based on the advice.

Appendix B - Procedures in the event of a sudden bushfire

Relocate to onsite 'safer building location'

The principal may enact this standalone bushfire plan including relocating to the onsite safer building location(s) as deemed necessary, or upon the advice of the Incident Controller, emergency services, Director of Education, Security and Emergency Management or Incident Support Unit.

When sheltering in place do not use an open area such as a school oval or non-enclosed building.

Initiate this procedure if any of the following occurs:

- a 'Watch and Act' or 'Emergency Warning' alert is issued for an area including the school site on the [Emergency WA](#) website (refer to Appendix A for details about the alerts).
- instruction is received from the Incident Controller, emergency services, Director of Education, Security and Emergency Management or Incident Support Unit..
- any other conditions (eg. smoke or ember attack) where the principal or site manager deem it necessary to initiate this procedure.

Follow these procedures to relocate to the onsite safer building location(s).

Action	Notes (if required)
<p>Dial 000 for emergency services and request fire brigade.</p> <p>When connected to Department of Fire and Emergency Services, advise:</p> <ul style="list-style-type: none"> • your school name and address • the fire situation • how many students and staff are being impacted • if moving to a 'safer building location' and where it is located • if anyone requires medical attention • CB radio channel, if being used. <p>Remain in contact with the Department of Fire and Emergency Services.</p> <p>Monitor official bushfire emergency information contact sources in section 2.1.</p>	
<p>Activate your school or site response team to carry out their responsibilities (section 3).</p>	
<p>Use your emergency response contact list to contact stakeholders (section 2).</p>	
<p>Follow your bushfire response telephone call tree (section 4) to communicate with the community.</p> <p>Ensure parents receive emergency text message alerts to:</p> <ul style="list-style-type: none"> • inform them of relocation • keep them updated (use the emergency text message alert templates, refer to Manage bushfire incident communications on Ikon). <p>Parents must not collect students until instructed.</p>	

<p>Confirm:</p> <ul style="list-style-type: none"> • evaporative air conditioners are turned off • all building roof vents, windows and doors are closed before anyone enters the onsite safer building location(s). • where possible and safe to do so, relocate vehicles or other combustible items (school bags, rubbish bins etc) at least 20 metres from safer building locations. • monitor embers for possible ignition. 	
<p>Take emergency equipment (section 5):</p> <ul style="list-style-type: none"> • registers for students, staff and visitors • evacuation kit • water • mobile phones (charged) • student medication 	
<p>Sound the school or site emergency warning or alert system.</p>	
<p>The principal/site manager to liaise directly with emergency services to assess risk levels and confirm a safe alternative location for shelter or evacuation.</p> <p>If emergency services cannot be, for example no phone or internet services, then relocate students to the best solid structure – look for a solid brick or stone building with multiple entry and exits, minimal ember entry points and as much clearance from vegetation as possible.</p> <p>Students and staff must remain in classrooms or rooms unless they are directed to move to an onsite safer building location.</p>	
<p>Check student, staff and visitor registers after moving to an onsite safer building location (roll call). Advise the police if anyone is missing.</p> <p>You must give special consideration to students with known respiratory conditions.</p>	
<p>Wait for emergency services to arrive or the incident controller to provide you with information.</p> <p>Ongoing advice will also be provided by the Manager, Security and Emergency Management or the director of education.</p> <p>Continue to monitor official bushfire information sources listed in section 2.1.</p>	
<p>The Department will consult the incident controller or emergency services and notify you when it is safe to return to classrooms or for students to be collected by parents. You will receive advice from the director of education.</p>	

Offsite evacuation procedures

You may be instructed to relocate to your offsite evacuation location.

The principal must act on the official advice received from the Incident Controller, emergency services, director of education, Security and Emergency Management or Incident Support Unit, which includes remaining on site and preparing for possible evacuation.

Offsite evacuation procedures should be initiated under direction from either:

- the Incident Controller
- OR
- the director of education

Follow these procedures if you need to evacuate to an offsite evacuation location during a bushfire event.

Action	Notes (if required)
<p>Dial 000 for emergency services and request fire brigade.</p> <p>When connected to Department of Fire and Emergency Services, advise:</p> <ul style="list-style-type: none"> • your school or site name and address • the fire situation • how many students and staff are being impacted • if moving to a 'safer building location' and where it is located • if anyone requires medical attention • CB radio channel, if being used. <p>Remain in contact with Department of Fire and Emergency Services and your director of education.</p> <p>Monitor official bushfire emergency information contact sources listed in section 2.1.</p>	
<p>Activate your School or site response team to carry out their responsibilities (section 3).</p>	
<p>Refer to the Emergency response contact list to contact stakeholders (section 2).</p>	
<p>Follow advice from the incident controller, emergency services or the Manager, Security and Emergency Management, director of education or Incident Support Unit to decide which of the school or site's offsite evacuation location(s) is the safest to use (section 7.2).</p>	
<p>If safe to do so, muster at the identified assembly area where staff, students and visitors can gather to prepare for offsite evacuation.</p> <p>Use an alternative assembly area if your first identified assembly area is unsafe.</p>	

<p>Note: Students and staff must remain in classrooms or rooms unless they are directed to move to an onsite safer building location and/or onsite assembly area.</p>	
<p>Follow the Bushfire response telephone call tree to communicate with the community (section 4).</p> <p>Ensure parents and carers receive emergency SMS alerts to:</p> <ul style="list-style-type: none"> • inform them of relocation • keep them updated (use the emergency text message alert templates, refer to Manage bushfire incident communications on Ikon). <p>Note: Parents must not collect students until instructed.</p>	
<p>Confirm:</p> <ul style="list-style-type: none"> • evaporative air conditioners are turned off • building roof vents and doors are closed. 	
<p>Take emergency equipment (section 5):</p> <ul style="list-style-type: none"> • registers for students, staff and visitors • evacuation kit • mobile phones (charged). • student medication. <p>Sound the school or site emergency warning or alert system.</p>	
<ul style="list-style-type: none"> • Notify bus operators • Notify other contractors scheduled to visit the site • Move all students, staff and visitors from the assembly area to the offsite evacuation location. 	
<p>Check registers after evacuating staff, students and visitors (roll call). Advise the police if anyone is missing.</p>	
<p>The Manager, Security and Emergency Management or the director of education will provide ongoing advice. Continue to monitor official bushfire information sources listed in section 2.1.</p>	
<p>The Incident Controller, emergency services or the Manager, Security and Emergency Management or Incident Support Unit will notify the director of education when it is safe to return to classrooms or for students to be collected by parents. You will receive advice from the director of education.</p>	

Appendix C - Pre-emptive (planned) school closure procedures

You may be instructed to pre-emptively close your school due to a fire behaviour index of 75 (extreme fire danger) or greater being forecast.

Note: Residential and agricultural colleges remain open when a forecast of a fire behaviour index of 75 (extreme fire danger rating) or greater is issued. These sites must have procedures in place to:

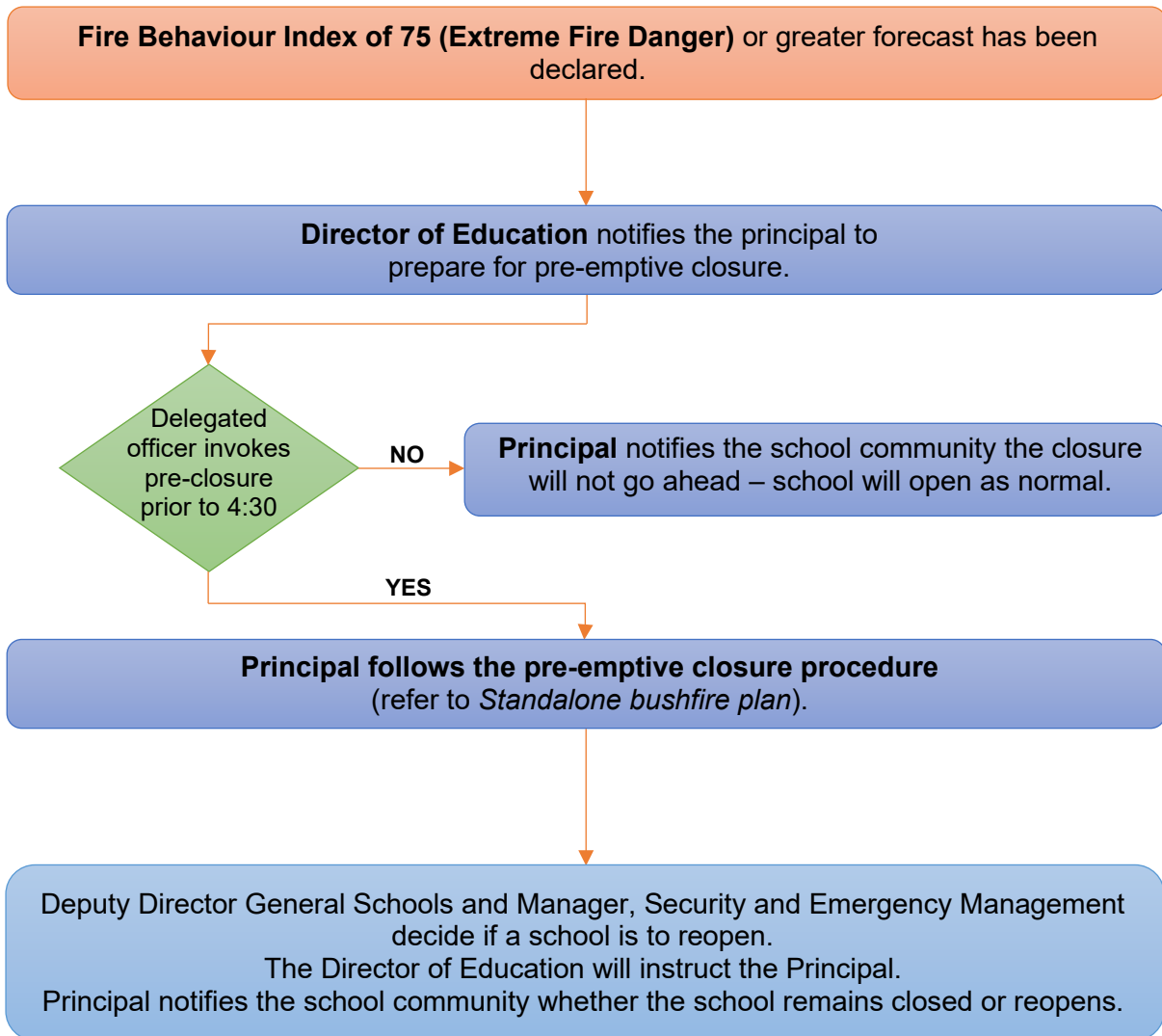
- monitor conditions
- move to the onsite safer building location, if there is any sign of a bushfire
- action an offsite evacuation, on advice from the emergency services.

Schools must initiate the closure procedures below if they receive advice from the director of education or the Security and Emergency Management unit.

Action	Notes (if required)
Monitor official bushfire emergency information contact sources listed in section 2.1.	
Activate your School response team to carry out their responsibilities (section 3).	
<p>Communicate the pre-emptive closure, continued closure or school or site reopening:</p> <ul style="list-style-type: none"> • use your Emergency response contact list to contact stakeholders (section 2) • use your Bushfire response telephone tree (section 4) • use communication templates in Manage bushfire incident communications for SMS, social media posts and Connect notices to keep your community informed • place the notice of temporary closure on external school or site access points and on the school website. <p>Note: Contact lists for staff, parents and carers must be current.</p>	
<p>Confirm:</p> <ul style="list-style-type: none"> • windows and doors are closed • evaporative air conditioners are turned off • roof vents closed • money is removed from the school premises • expensive items of equipment secured. 	
<p>Secure school premises and activate security system.</p> <p>Before departing, email AssetPlanningServices.SecurityEM@education.wa.edu.au or call 9264 4632 to confirm:</p> <ul style="list-style-type: none"> • all security systems armed • site is secure. 	
When the pre-emptive closure is cancelled, remove the notice of temporary closure from external school access points.	

Refer to the following Flow chart – Principal's pre-emptive school closure response.

Flow chart – Principal’s pre-emptive school closure response



Appendix D – After-hours or school holiday procedures

You may be instructed to keep your school or site closed during the school holidays or after hours during a bushfire event.

Initiate the below procedure if both of the following occur:

- A 'Watch and act' or 'Emergency warning' bushfire warning alert on the [Emergency WA](#) website is invoked (refer to the bushfire warnings listed in Appendix A)
AND
- Direction received from the Deputy Director General, Schools or the Manager, Security and Emergency Management. The director of education will relay the decision to you.

Follow these procedures if a bushfire starts during the school holidays or after hours.

Action	Notes (if required)
Remain in contact with your director of education and monitor official bushfire emergency information contact sources listed in section 2.1.	
Use your emergency response contact list to contact stakeholders (refer to section 2).	
Follow the bushfire response telephone call tree to communicate with your community. Send parents and carers and staff emergency text message alerts to inform them of the school or site closure. To access sample SMS text, refer to Manage bushfire incident communications .	
Work with the director of education to seek alternative school or site and transport arrangements (if required).	
The Department's Media Unit and Incident Support Unit uses media outlets and Emergency WA to make public announcements of: <ul style="list-style-type: none"> • the school or site closure • temporary alternative accommodation. 	
The Department will consult the incident controller or emergency services and notify you when it is safe for the school or site to reopen. You will receive advice from the director of education or the Manager, Security and Emergency Management.	
Send parents, carers and staff emergency text message alerts to inform them when school or site can reopen.	